

SKID-STEER LOADER XC7-SR08

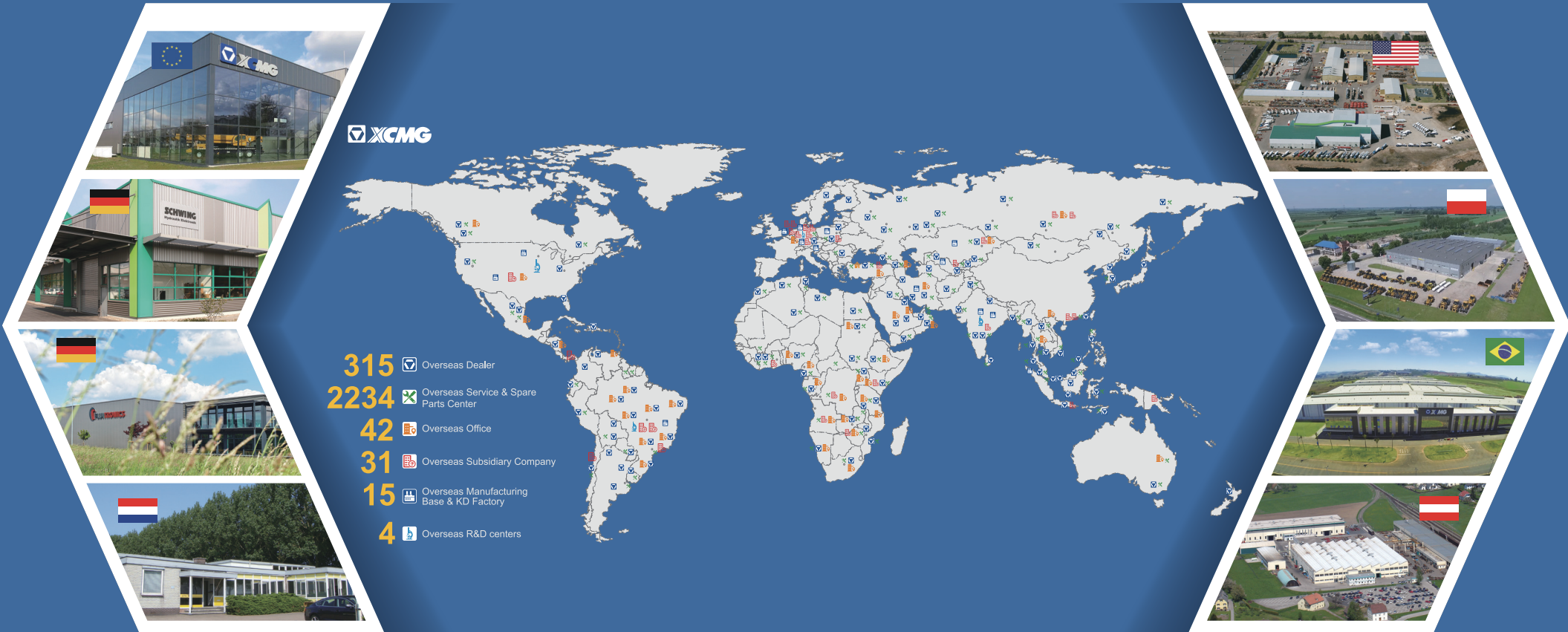


EU Stage V/EPA Tier IV



XC7-SR08

XCMG North America Corporation
5145 Schirlls St Las Vegas, NV 89118
Email: xcmgna@xcmg.com
Phone: 725-605-2777
Web: www.xcmg-usa.com



INTRODUCTION OF XCMG

XCMG, as a leading enterprise valued of 100 billion RMB, with the largest scale, the best technology level, the largest export volume, and high competitiveness and influence in China's construction machinery industry, has been occupying the first place in China's construction machinery industry for decades, and it now ranks the third in the world industry and the 395th among the world's top 500 brands.

The main products by XCMG consists of 16 categories of equipment such as hoisting machinery, excavation machinery, concrete machinery, mining machinery, earth-moving machinery and road machinery, etc., as well as three categories of key components such as hydraulic system, transmission system and electric control system. Among above-mentioned, hoisting machinery ranks first in the world, and package solution of road construction and maintenance machinery, piling machinery and concrete machinery are among the first-class bloc in the world.

XCMG has accumulated more than 8000 approved patents, including more than 1900 invention patents and more than 130 PCT international patents. Entities of R&D centers, manufacturing plants or KD factories are in operation in more than 10 countries such as Germany, the United States, Brazil and India, XCMG has also acquired three European enterprises including Schwing in Germany. The Brazil manufacturing plant, with an investment of 350 million dollars to build up factories on a bare ground, has become a model of economic cooperation between China and Brazil. At present, XCMG products are exported to 187 countries and regions, covering 97% of the countries along "The Belt and Road" area. In export business to 35 countries, XCMG's proportion ranks NO. 1, with a steady first place within Chinese industry in terms of annual export volume and overseas income.



Description & Features

- XC7-SR08 is an innovative skid steer loader developed by XCMG based on the international R&D platform according to the needs of North America market. With upgraded technology and improved performance, it can be used for a variety of applications such as road construction/maintenance/cleaning, buildings construction engineering, forestry, garden landscape, agriculture, slope paving/leveling, and lifting/handling.
- XC7-SR08 features excellent safety, reliability, advanced technology, efficiency and other advantages. The radial lifting mechanism independently designed by XCMG features higher lifting capacity and one-way leveling function, which is able to ensure higher operation efficiency. The panoramic cab is configured with FOPS and ROPS devices as standard to ensure higher safety and reliability. The spaceship-style cockpit features the electronic real-time monitoring system with intelligent advanced screen, which combines the design and performance perfectly, and improves the level of intelligence and comfort significantly.

- **Drivetrain system:** well-known brand engine with excellent power performance, and the emission standard is EPA T4F certified. Maintenance-free sprocket box designed with long wheelbase and adapted to various ultra-heavy-duty operating conditions, featuring incomparable stability.
- **Hydraulic system:** key components from world-class brands, supporting boom lifting and leveling operations, as well as stepless speed regulation and intelligent control of coupled tools. Locking, centralized pressure measurement and parking brake functions; ensuring fast and efficient transfer with a driving speed up to 14km/h.

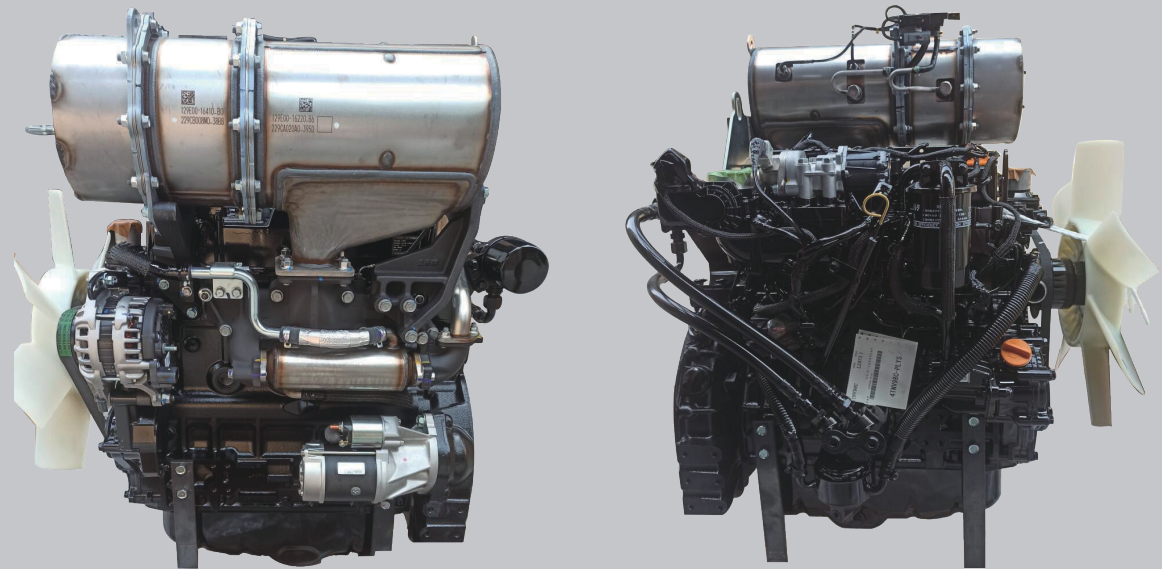


- **Operating unit:** Radial lifting mechanism independently designed by XCMG, featuring higher lifting capacity, universal quick couplings enabling easy change of various operating units to meet different operating requirements.
- **Pilot control:** pilot control system, higher safety with electric control interlock(interlock override)

Product reliability

- Warm-up idle speed: able to reach the operating temperature more quickly by increasing the engine idle speed slightly after the vehicle is started in the cold state.
- Engine monitoring and alarm: monitoring the coolant temperature, engine oil pressure, hydraulic oil temperature, etc.; producing an alarm and displaying the fault code in case the measured data exceeds the set value.
- Overload protection: able to limit the output torque and speed of the engine in case of overload for a prolonged duration, in order to prevent overheating and damage, minimize wear and avoid further failures.

- The welded sprocket box is integrated with the frame, featuring high structural strength, easy disassembly/assembly, and zero maintenance.
- High-strength roller bearings can withstand large radial and axial loads, and guarantee better performance under vibration and impact load conditions.



Comfort design



- The super-large luxurious cab is integrated with XCMG family-style design and C-type appearance, featuring spacious room and wide field of view.
- The air conditioner features excellent performance due to optimized internal air duct, balanced flow field and stable temperature control, and is configured with eight air outlets and supports glass defrosting and foot warming functions.

— The machine is equipped with hydraulic pilot + hydraulic control & multi-functional electric control to improve operating comfort.

— The mechanical suspension seat, featuring anti-vibration performance according to the EM9 standard, can be adjusted at different angles according to the comfort of the human body, and is configured with a 3" wide seat belt as standard.



Maintainability

- The cab can be tipped over at a large angle, and the rear and upper hoods can be rotated to open. The quickly-detachable side panels and foot compartment enable convenient repair and maintenance of vehicle components.
- Cockpit maintainability: All electrical components (battery, fuses and switches), filter and oil drain port are easily accessible.



- The combined pressure testing connector can quickly test the pressure of the hydraulic system, and efficiently analyze and eliminate system faults.



No Compromise On Safety

— ROPS&FOPS Cab

ROPS (Rollover Protective System) and FOPS(Falling Object Protective Structure) are standard equipment to protect operator.The ROPS and FOPS cab is certified, satisfy with ISO standard.



— Rearview camera

The standard rearview camera is available on the SR08 to see the jobsite behind the machine, keep harms away.The rear camera integrate seamless into display.



— Interlock System

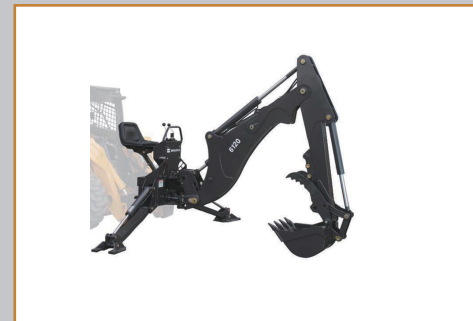
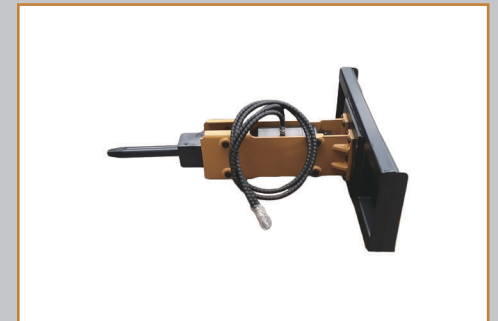
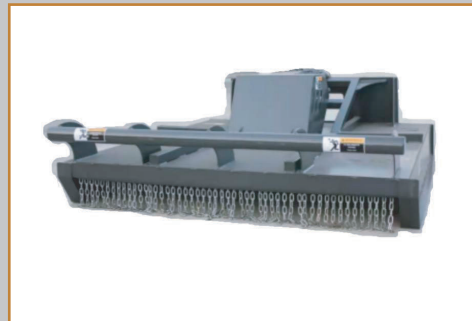
The front door of cab is the first interlock.Which prevents the boom lifting unless closed.The armrest is the second interlock-starting Engine after down.



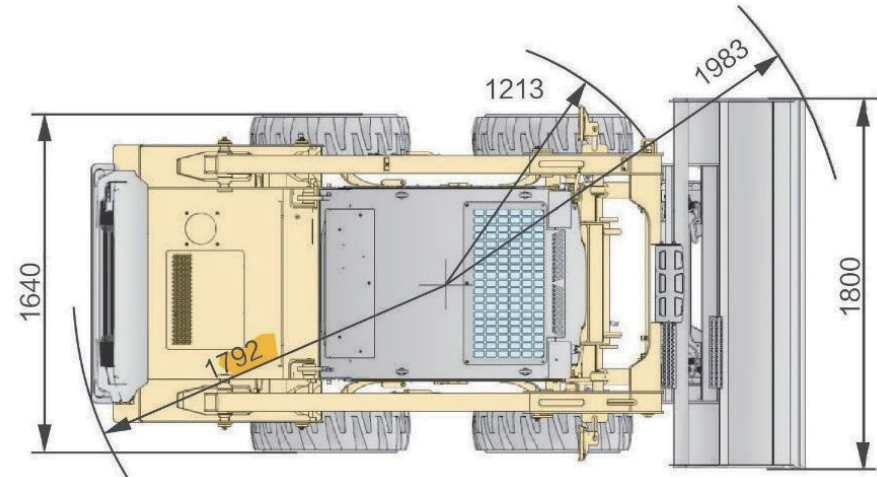
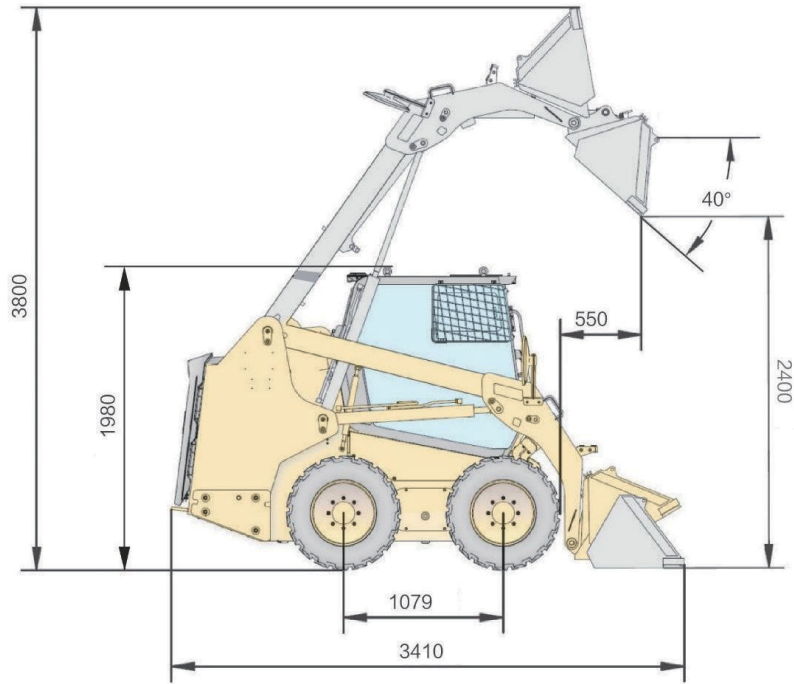


— Quick Coupler and Attachments

Our quick coupler is designed as ISO Standard which is widely used, the standard quick coupler allows one machine to use a series of attachments, give you business greater versatility. Skid steer loaders are compatible with buckets, brooms, hydraulic hammers, augers, forks, bale huggers, dozer blades and other attachments.



Technical Specifications



SPECIFICATIONS

Rated load	955kg	2105.5lb	Wheel base	1079mm	42.5IN
Bucket capacity	0.4m ³	0.6yd ³	Wheel track	1370mm	54.0IN
Operating mass	3210kg	7076.9lb	Max breakout force	24kN	5395.5lbf
Rated power of the engine	55.8 kW(YUCHAI) / 50.2kW (YANMAR) 75hp(YUCHAI)/67hp(YAMMAR)		Max tractive force	25kN	5620.3lbf
Rated speed of the engine	2400rpm		Total cycle time	≤10S	
Dumping height	2400mm	94.5IN	Max driving speed	14km/h	8.7mi/h
Dumping range	550mm	21.7IN	Overall dimensions (L × W × H)	3410×1800×1960mm	11.2×6.0×6.5ft

Technical Specifications

ENGINE

Brand & specification	4TNV98C-PTY (YANMAR)
Type	Inline four-cylinder, naturally aspirated, high pressure common rail
Displacement	3.319L(0.9gal)
Max torque	229~241/1560±25Nm/rpm
Emission standard	EPA T4F、EU stage V

HYDRAULIC SYSTEM

Standard auxiliary flow	79 L/min	20.9 gal/min
High auxiliary flow	125 L/min	33.1 gal/min
Hydraulic pressure	210 bar	3.1 ksi

CAB

ROPS	according to ISO 3471:2008
FOPS	according to ISO 3449:2005 Level I

TYRE

Specification	10-16.5
---------------	---------

AIR CONDITIONING SYSTEM

Type	Cooling and heating
------	---------------------

STANDARD EQUIPMENT

ENGINE

Yanmar, EPA Final Tier 4/ EU Stage V emissions, 4 cylinder 4 stroke
Electronic injection system

COOLING

Engine driven

POWERTRAIN

Hydrostatic transmission
Closed-center hydraulic
Hydraulic released parking brakes
Four wheel drive

HYDRAULIC

Axial-piston hydrostatic pump
Pilot control
ISO mode joysticks
Third function valve standard
Standard hydraulic flow 79L/min
Maximum hydraulic flow 125L/min

ELECTRIC

Four LED lights
Battery,
Backup alarm
Electric horn
Rotating beacon
Front windshield wiper

TIRE

10-16.5

LINKAGE& ATTACHMENT

Radial lift
Quick coupler standard
ISO standard interface

BUCKET

0.45m³(0.59yd³)

CAB

ROPS/FOPS cab
Adjust seat with suspension
Armrest and control interlock
Air conditioning
Rearview mirror
Fire extinguisher
Retractable seat belt
Rearview camera

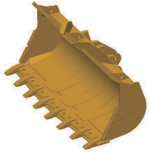
OTHER

Hour meter
Voltage
Coolant temperature
Hydraulic oil level sight gauge
Coolant level sight gauge
Engine oil temperature
Engine oil pressure
Hydraulic oil temperature

OPTIONAL EQUIPMENT

Additional counterweight
Additional attachment

Optimum Services , XCMG Guaranteed



XCMG approved attachments



Genuine parts



Financial solutions



Maintenance contract



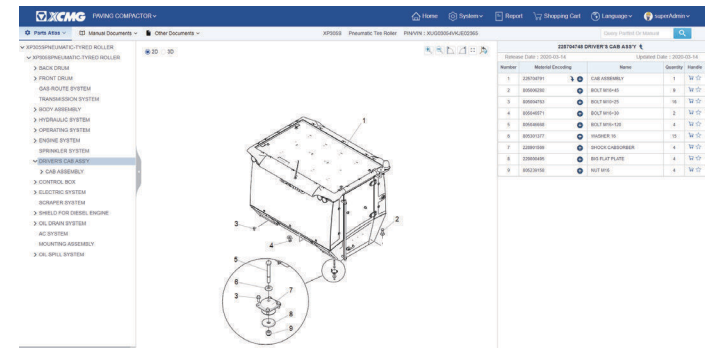
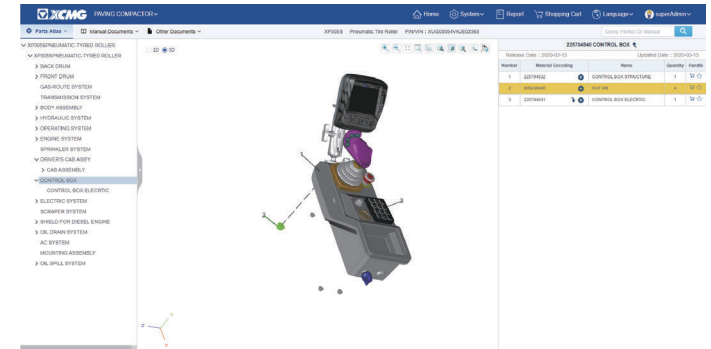
Full Range of Services Ready for You

In order to respond to your needs as fast as possible, XCMG experts can be dispatched to your job site from a facility near you. A full range of services are available to reduce your total cost of ownership and increase your revenue.

Professional Integrated Complete Solutions

XCMG group has built a strong reputation based on the quality, reliability and durability of its construction machinery. XCMG has established a world wide service and parts network to provide support to every customer regardless of location.

XCMG Global Spare Parts System



Mobile cranes



Excavators



Aerial work platforms



Wheel loaders



Road machinery



 **XCMG**

